

PRO RR

CANOPIES

EASY LED
www.easyled.fi

PRO RR Canopy Light

Easy LED PRO RR is a bright and compact canopy light for doorways, canopies and platforms for bus or rail traffic. The luminaire is available in both surface (PRO RR P) and recessed (PRO RR U) models and suits also well for retrofitting.

Versatile PRO RR is designed for outdoor and can be installed in many different structures. There is also a wide range of lenses available for different needs.

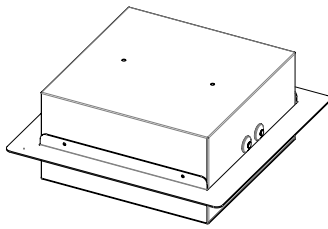
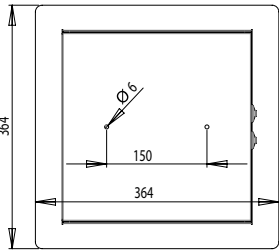
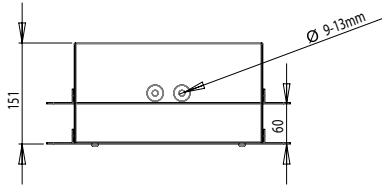
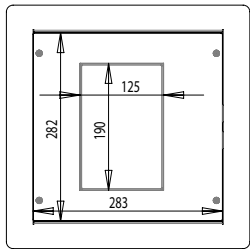
Compact PRO RR has a neat and inconspicuous design. Its size allows for installing into most existing mountings and mounting holes.

Durable PRO RR is built in a tough aluminum housing with a polycarbonate plate protecting the lenses. Both models also have a stainless steel installation frame.

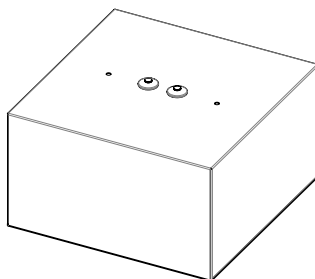
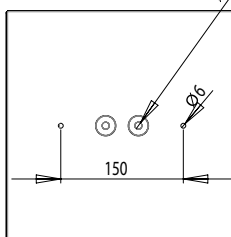
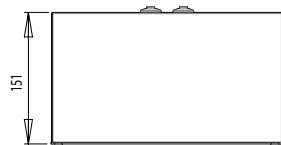
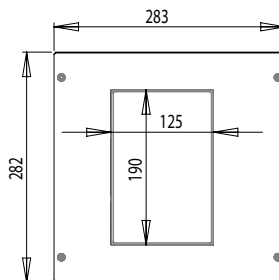


PRO RR Canopy Light

PRO RR - U



PRO RR - P



Housing: Luminaire, anodized aluminum, installation frame, stainless steel

Optics: Optimized, shockproof and UV protected Easy LED polycarbonate optics, several light distribution options, Frost 80° as standard.

Protection rating: Driver & led module IP66

Temperature rating: Designed for ambient temperatures from -40°C to +55°C (15 W & 25 W) or -40°C to +40°C (30 W & 39 W) (95 % RH)

Thermal protection: Automatic thermal protection with output current dimming

Maintenance free luminaire usage life: 80 000 h at up to +55°C ambient (15 W & 25 W) or 80 000 h at up to +40°C ambient (30 W)

Input voltage: 230 VAC (operation voltage range 195,5-253 VAC)

Input frequency: 50/60 Hz

Intelligent inrush current control: As standard

Luminaire protection class: I

Surge protection: (common & diff) 4 kV / 3 kA

Inrush current peak: 0,38 A, t=10 ms (50 % I_{peak})

Earth leakage current: 0,41 mA

Weight: 6 kg (PRO RR U)
5 kg (PRO RR P)

Dimensions (LxWxH): 364 x 364 x 151 mm (PRO RR U)
283 x 282 x 151 mm (PRO RR P)

System power [W]:	Current [A]:	Luminous Flux* [lm]:
15 W	0,09 A	1600 lm
25 W	0,13 A	2700 lm
30 W	0,14 A	3200 lm

*Luminous flux for 4 000 K. Values shown are nominal values and are subject to +/- 10 % tolerance. For latest values, ask for light distribution files.

Standard light color selection (CCT nominal)	Standard			
	3 000 K	4 000 K	5 000 K	6 000 K
Color Rendering Index (CRI) typical	72			70
Luminaire luminous efficacy typical* (CRI 70/72)	100 lm/W	105 lm/W	110 lm/W	115 lm/W

* Dependent on choice of optical solution. For latest values, ask for light distribution files.